

Source: Leece-Neville Heavy Duty Systems Division - Arcade, NY USA  
Date: June 27, 2017  
Bulletin No: TSB-1015  
Models: A0014991PA, A0014992PA  
Subject: Regulator Change Out Procedure on Pierce Manufacturing Dash Series Fire Trucks

**Regulator change out procedure for A0014991PA and A0014992PA on Pierce Mfg Dash series fire trucks**

1) ☐ Disconnect ground cables from batteries.

2) ☐ Remove alternator drive belt.

**Top mounted alternator.**

3) ☐ Disconnect intercooler tube from turbo and reposition tube to allow access to top alternator mounting bolts.

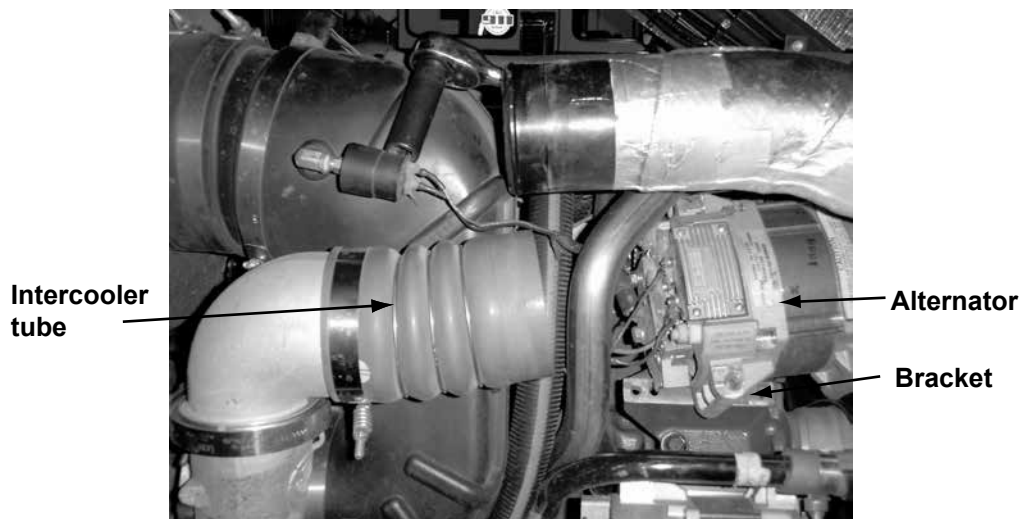
4) ☐ Remove mounting bolts on top mounted alternator. Leave cables attached to alternator and slide alternator forward until access to the regulator can be obtained.

5) ☐ Remove green and purple leads from back of alternator.

Green Wire: Ignition

Purple: Sync

Picture below shows vehicle with intercooler tube disconnected and alternator moved forward on bracket so access to the regulator can be obtained.



6) ☐ Refer to TSB-1016 for the specific procedure for changing the 4900 series regulator.

Important: The information contained in this bulletin is intended for use by trained, professional technicians who have the proper tools, equipment, and training to perform the required maintenance described above. This information is NOT intended for 'do-it-yourselfers'; and you should not assume that this information applies to your equipment. If you have any questions regarding this information please visit our website at [www.prestolite.com](http://www.prestolite.com), or contact our technical service department at:

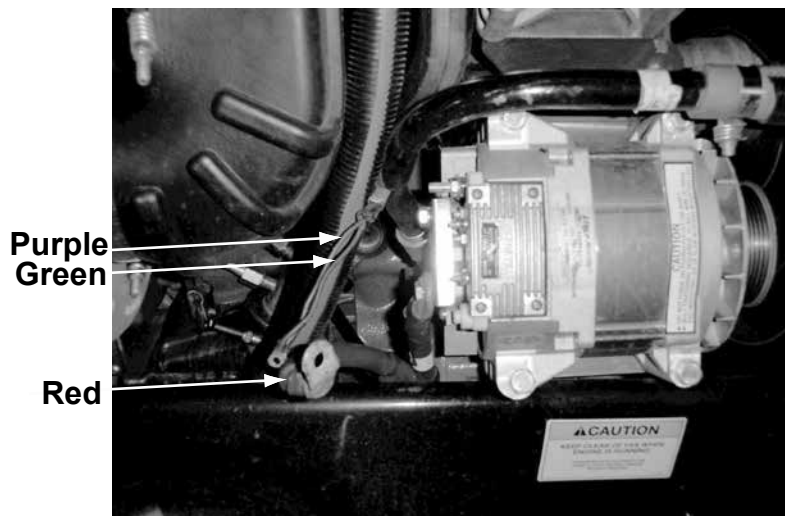
Date: June 27, 2017

Bulletin No: TSB-1015

- 7) ☐ Attached green and purple leads to the back of the alternator (Torque terminals to 20-25 in-lbs).
- 8) ☐ Slide alternator back on mounting bracket. Install alternator mounting bolts and torque to manufacturer specifications.
- 9) ☐ Verify both positive and negative alternator cables are tight.
- 10) ☐ Install intercooler tube to turbo and tighten clamp.

**Bottom mounted alternator**

- 11) ☐ Remove green and purple leads from back of alternator.
- 12) ☐ Remove red positive cable from back of alternator.  
Picture below shows alternator with green, purple wires and red cable removed.



- 13) ☐ Refer to TSB-1016 for the specific procedure for changing the 4900 series regulator.
- 14) ☐ Attach red positive cable to alternator positive terminal. (Torque terminal to 80-120 in-lbs.)
- 15) ☐ Attach green and purple wire to back of alternator. (Torque to 20-25 in-lbs.)
- 16) ☐ Install alternator drive belt.
- 17) ☐ Connect vehicle batteries.
- 18) ☐ Start engine and check alternator performance following the troubleshooting procedure #TSB-1017.

Important: The information contained in this bulletin is intended for use by trained, professional technicians who have the proper tools, equipment, and training to perform the required maintenance described above. This information is NOT intended for 'do-it-yourselfers'; and you should not assume that this information applies to your equipment. If you have any questions regarding this information please visit our website at [www.prestolite.com](http://www.prestolite.com), or contact our technical service department at: